

the 1990s, the number of people in the United States who are 65 years of age and older has increased by 50 percent, and the number of people 75 years of age and older has increased by 100 percent. The number of people 85 years of age and older has increased by 200 percent. The number of people 95 years of age and older has increased by 400 percent. The number of people 100 years of age and older has increased by 1,000 percent. The number of people 105 years of age and older has increased by 2,000 percent. The number of people 110 years of age and older has increased by 4,000 percent. The number of people 115 years of age and older has increased by 8,000 percent. The number of people 120 years of age and older has increased by 16,000 percent. The number of people 125 years of age and older has increased by 32,000 percent. The number of people 130 years of age and older has increased by 64,000 percent. The number of people 135 years of age and older has increased by 128,000 percent. The number of people 140 years of age and older has increased by 256,000 percent. The number of people 145 years of age and older has increased by 512,000 percent. The number of people 150 years of age and older has increased by 1,024,000 percent. The number of people 155 years of age and older has increased by 2,048,000 percent. The number of people 160 years of age and older has increased by 4,096,000 percent. The number of people 165 years of age and older has increased by 8,192,000 percent. The number of people 170 years of age and older has increased by 16,384,000 percent. The number of people 175 years of age and older has increased by 32,768,000 percent. The number of people 180 years of age and older has increased by 65,536,000 percent. The number of people 185 years of age and older has increased by 131,072,000 percent. The number of people 190 years of age and older has increased by 262,144,000 percent. The number of people 195 years of age and older has increased by 524,288,000 percent. The number of people 200 years of age and older has increased by 1,048,576,000 percent. The number of people 205 years of age and older has increased by 2,097,152,000 percent. The number of people 210 years of age and older has increased by 4,194,304,000 percent. The number of people 215 years of age and older has increased by 8,388,608,000 percent. The number of people 220 years of age and older has increased by 16,777,216,000 percent. The number of people 225 years of age and older has increased by 33,554,432,000 percent. The number of people 230 years of age and older has increased by 67,108,864,000 percent. The number of people 235 years of age and older has increased by 134,217,728,000 percent. The number of people 240 years of age and older has increased by 268,435,456,000 percent. The number of people 245 years of age and older has increased by 536,870,912,000 percent. The number of people 250 years of age and older has increased by 1,073,741,824,000 percent. The number of people 255 years of age and older has increased by 2,147,483,648,000 percent. The number of people 260 years of age and older has increased by 4,294,967,296,000 percent. The number of people 265 years of age and older has increased by 8,589,934,592,000 percent. The number of people 270 years of age and older has increased by 17,179,869,184,000 percent. The number of people 275 years of age and older has increased by 34,359,738,368,000 percent. The number of people 280 years of age and older has increased by 68,719,476,736,000 percent. The number of people 285 years of age and older has increased by 137,438,953,472,000 percent. The number of people 290 years of age and older has increased by 274,877,906,944,000 percent. The number of people 295 years of age and older has increased by 549,755,813,888,000 percent. The number of people 300 years of age and older has increased by 1,099,511,627,776,000 percent. The number of people 305 years of age and older has increased by 2,199,023,255,552,000 percent. The number of people 310 years of age and older has increased by 4,398,046,511,104,000 percent. The number of people 315 years of age and older has increased by 8,796,093,022,208,000 percent. The number of people 320 years of age and older has increased by 17,592,186,044,416,000 percent. The number of people 325 years of age and older has increased by 35,184,372,088,832,000 percent. The number of people 330 years of age and older has increased by 70,368,744,177,664,000 percent. The number of people 335 years of age and older has increased by 140,737,488,355,328,000 percent. The number of people 340 years of age and older has increased by 281,474,976,710,656,000 percent. The number of people 345 years of age and older has increased by 562,949,953,421,312,000 percent. The number of people 350 years of age and older has increased by 1,125,899,906,842,624,000 percent. The number of people 355 years of age and older has increased by 2,251,799,813,685,248,000 percent. The number of people 360 years of age and older has increased by 4,503,599,627,370,496,000 percent. The number of people 365 years of age and older has increased by 9,007,199,254,740,992,000 percent. The number of people 370 years of age and older has increased by 18,014,398,509,481,984,000 percent. The number of people 375 years of age and older has increased by 36,028,797,018,963,968,000 percent. The number of people 380 years of age and older has increased by 72,057,594,037,927,936,000 percent. The number of people 385 years of age and older has increased by 144,115,188,075,855,872,000 percent. The number of people 390 years of age and older has increased by 288,230,376,151,711,744,000 percent. The number of people 395 years of age and older has increased by 576,460,752,303,423,488,000 percent. The number of people 400 years of age and older has increased by 1,152,921,504,606,846,976,000 percent. The number of people 405 years of age and older has increased by 2,305,843,009,213,693,952,000 percent. The number of people 410 years of age and older has increased by 4,611,686,018,427,387,904,000 percent. The number of people 415 years of age and older has increased by 9,223,372,036,854,775,808,000 percent. The number of people 420 years of age and older has increased by 18,446,744,073,709,551,616,000 percent. The number of people 425 years of age and older has increased by 36,893,488,147,419,103,232,000 percent. The number of people 430 years of age and older has increased by 73,786,976,294,838,206,464,000 percent. The number of people 435 years of age and older has increased by 147,573,952,589,676,412,928,000 percent. The number of people 440 years of age and older has increased by 295,147,905,179,352,825,856,000 percent. The number of people 445 years of age and older has increased by 590,295,810,358,705,651,712,000 percent. The number of people 450 years of age and older has increased by 1,180,591,620,717,411,303,424,000 percent. The number of people 455 years of age and older has increased by 2,361,183,241,434,822,606,848,000 percent. The number of people 460 years of age and older has increased by 4,722,366,482,869,645,213,696,000 percent. The number of people 465 years of age and older has increased by 9,444,732,965,739,290,427,392,000 percent. The number of people 470 years of age and older has increased by 18,889,465,931,478,580,854,784,000 percent. The number of people 475 years of age and older has increased by 37,778,931,862,957,161,709,568,000 percent. The number of people 480 years of age and older has increased by 75,557,863,725,914,323,419,136,000 percent. The number of people 485 years of age and older has increased by 151,115,727,451,828,646,838,272,000 percent. The number of people 490 years of age and older has increased by 302,231,454,903,657,293,676,544,000 percent. The number of people 495 years of age and older has increased by 604,462,909,807,314,587,353,088,000 percent. The number of people 500 years of age and older has increased by 1,208,925,819,614,629,174,706,176,000 percent. The number of people 505 years of age and older has increased by 2,417,851,639,229,258,349,412,352,000 percent. The number of people 510 years of age and older has increased by 4,835,703,278,458,516,698,824,704,000 percent. The number of people 515 years of age and older has increased by 9,671,406,556,917,033,397,649,408,000 percent. The number of people 520 years of age and older has increased by 19,342,813,113,834,066,795,298,816,000 percent. The number of people 525 years of age and older has increased by 38,685,626,227,668,133,590,597,632,000 percent. The number of people 530 years of age and older has increased by 77,371,252,455,336,267,181,195,264,000 percent. The number of people 535 years of age and older has increased by 154,742,504,910,672,534,362,390,528,000 percent. The number of people 540 years of age and older has increased by 309,485,009,821,345,068,724,781,056,000 percent. The number of people 545 years of age and older has increased by 618,970,019,642,690,137,449,562,112,000 percent. The number of people 550 years of age and older has increased by 1,237,940,039,285,380,274,899,124,224,000 percent. The number of people 555 years of age and older has increased by 2,475,880,078,570,760,549,798,248,448,000 percent. The number of people 560 years of age and older has increased by 4,951,760,157,141,521,099,596,496,896,000 percent. The number of people 565 years of age and older has increased by 9,903,520,314,283,042,199,193,993,792,000 percent. The number of people 570 years of age and older has increased by 19,807,040,628,566,084,398,387,



TRACT 1
PARCEL: 15 081 08 002
(POST PROPERTY LINE ADJUSTMENT)

SAID PROPOSED TRACT A CONTAINS 7,452,865 SQUARE FEET OR 171.095 ACRES OF LAND.

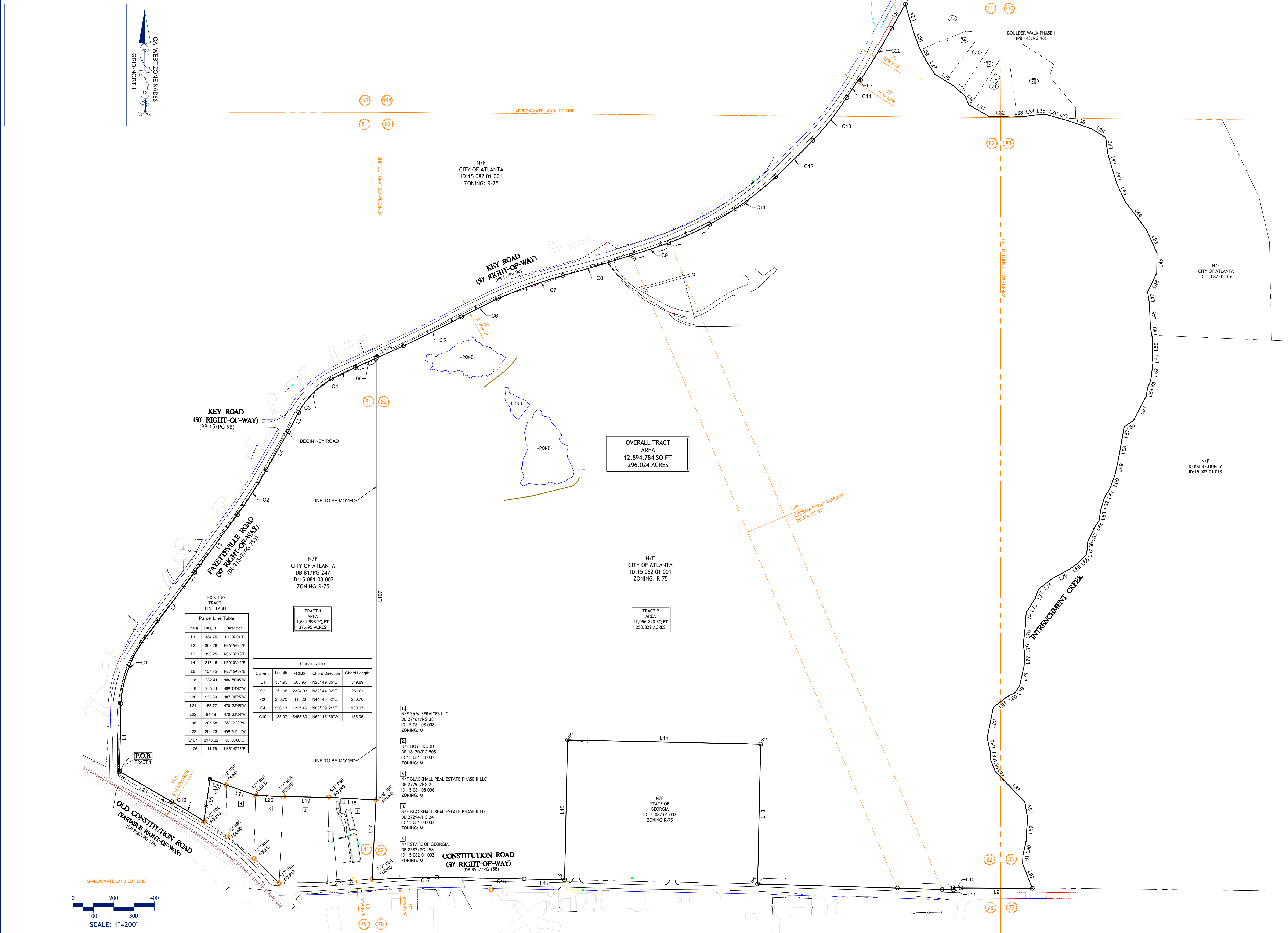
PARCEL:15 081 08 002
ATLANTA CITY OF OFFICE OF ENTERPRISE ASSETS
68 MITCHELL ST SW #1225
ATLANTA, GA 30303-3548

PARCEL:15 081 01 001
ATLANTA CITY OF OFFICE OF ENTERPRISE ASSETS
68 MITCHELL ST SW #1225
ATLANTA, GA 30303-3548

SIGNATURE OF DEVELOPER _____ DATE _____

Jaime F. Higgins 7/14/22
JAIME F HIGGINS, PLS CA2802 DATE

SHEET
1 OF 3

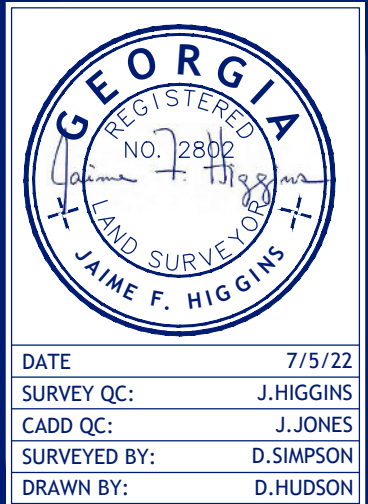


REVISIONS			
REV #	DATE	ADDRESS COMMENTS	DESCRIPTION
1	7/14/22		

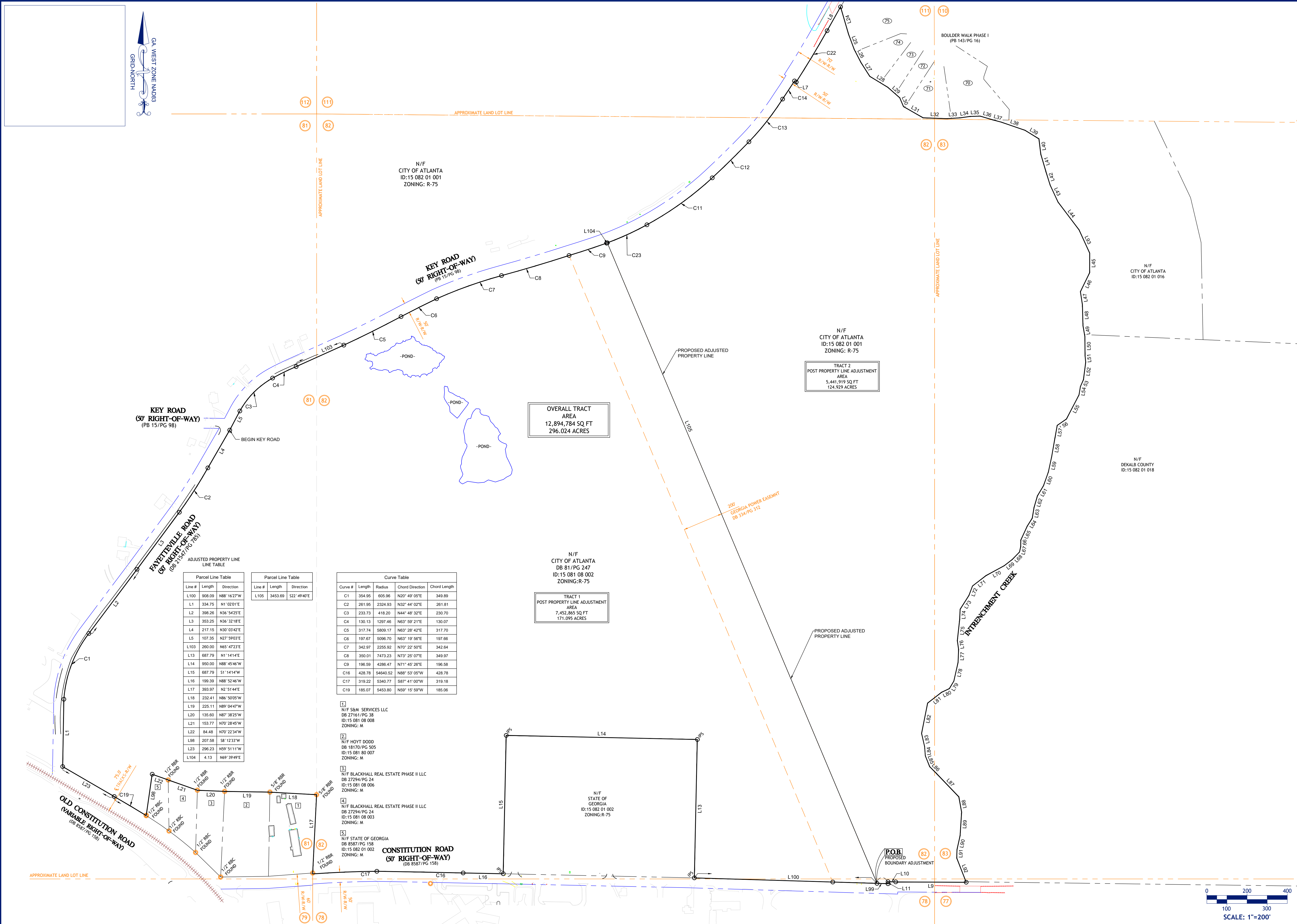
2550 HERITAGE COURT, STE 250
ATLANTA, GA 30339
TEL 770.951.2495, FAX 770.951.2496
www.longeng.com
LSF:#000744



PROPERTY LINE ADJUSTMENT PLAT
THE PURPOSE OF THIS PLAT IS TO ADJUST THE
PROPERTY LINE OF PARCEL 15 081 08 002
LL 81 & 82 - 15TH DISTRICT-DEKALB COUNTY-GEORGIA



SHEET
2 OF 3



KEY ROAD
(50' RIGHT-OF-WAY)
(PB 15/PG 98)

FAYETTEVILLE ROAD
(50' RIGHT-OF-WAY)
(PB 2154/PG 765)

ADJUSTED PROPERTY LINE
LINE TABLE

Line #	Length	Direction
L100	908.09	N88°16'27"W
L1	334.75	N1°02'01"E
L2	398.26	N36°54'25"E
L3	353.25	N36°32'18"E
L4	217.15	N30°03'42"E
L5	107.35	N27°59'03"E
L103	260.00	N65°47'23"E
L13	687.79	N1°14'14"E
L14	950.00	N88°45'46"W
L15	687.79	S1°14'14"W
L16	199.39	N88°52'46"W
L17	383.87	N2°51'44"E
L18	232.41	N86°50'05"W
L19	225.11	N89°04'47"W
L20	135.60	N87°38'25"W
L21	153.77	N70°28'45"W
L22	84.48	N70°22'34"W
L98	207.58	S8°12'33"W
L23	286.23	N59°51'11"W
L104	4.13	N69°39'49"E

Line #	Length	Direction
L105	3453.69	S22°49'40"E

Curve #	Length	Radius	Chord Direction	Chord Length
C1	354.95	605.96	N20°49'05"E	349.89
C2	261.95	2324.93	N32°44'02"E	261.81
C3	233.73	418.20	N44°48'32"E	230.70
C4	130.13	1297.46	N63°59'21"E	130.07
C5	317.74	5809.17	N63°28'42"E	317.70
C6	197.67	5096.70	N63°19'56"E	197.66
C7	342.97	2255.92	N70°22'50"E	342.64
C8	350.01	7473.23	N73°28'07"E	349.97
C9	196.59	4286.47	N71°45'28"E	196.58
C16	428.78	54640.52	N88°53'05"W	428.78
C17	319.22	5340.77	S87°41'00"W	319.18
C19	185.07	5453.80	N59°15'59"W	185.06

[1] N/F SRM SERVICES LLC
DB 27161/PG 38
ID:15 081 08 008
ZONING: M

[2] N/F HOYT DODD
DB 18170/PG 505
ID:15 081 80 007
ZONING: M

[3] N/F BLACKHALL REAL ESTATE PHASE II LLC
DB 27294/PG 24
ID:15 081 08 006
ZONING: M

[4] N/F BLACKHALL REAL ESTATE PHASE II LLC
DB 27294/PG 24
ID:15 081 08 003
ZONING: M

[5] N/F STATE OF GEORGIA
DB 8587/PG 158
ID:15 082 01 002
ZONING: M

CONSTITUTION ROAD
(50' RIGHT-OF-WAY)
(DB 8587/PG 158)

OVERALL TRACT AREA
12,894,784 SQ FT
296.024 ACRES

N/F
CITY OF ATLANTA
DB 81/PG 247
ID:15 081 08 002
ZONING: R-75

TRACT 1
POST PROPERTY LINE ADJUSTMENT
AREA
7,452,865 SQ FT
171.095 ACRES

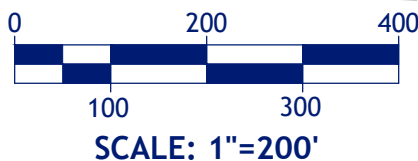
N/F
CITY OF ATLANTA
ID:15 082 01 001
ZONING: R-75

TRACT 2
POST PROPERTY LINE ADJUSTMENT
AREA
5,441,919 SQ FT
124.929 ACRES

200'
GEORGIA POWER EASEMENT
DB 534/PG 512

BOULDER WALK PHASE I
(PB 143/PG 16)

INTRENCHMENT CREEK



REVISIONS			
REV #	DATE	ADDRESS COMMENTS	DESCRIPTION
1	7/14/22		

2550 HERITAGE COURT, STE 250
ATLANTA, GA 30339
TEL 770.951.2495, FAX 770.951.2496
www.longeng.com
LSF:#000744



PROPERTY LINE ADJUSTMENT PLAT
THE PURPOSE OF THIS PLAT IS TO ADJUST THE
PROPERTY LINE OF PARCEL 15 081 08 002
LL 81 & 82 - 15TH DISTRICT-DEKALB COUNTY-GEORGIA



DATE 7/5/22
SURVEY QC: J.HIGGINS
CADD QC: J.JONES
SURVEYED BY: D.SIMPSON
DRAWN BY: D.HUDSON

SHEET
3 OF 3

LONG #0839-0030